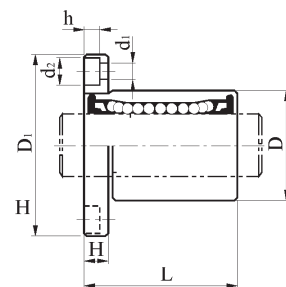
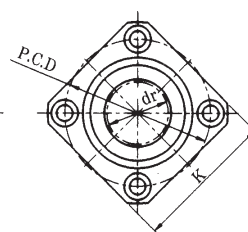
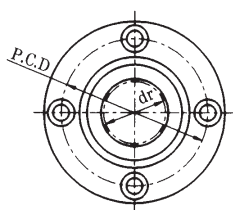


Manicotti flangiati KBF/KBK



Modello	N. di circuiti di sfere	Dimensioni principali [mm]											Eccentricità (max)	Capacità di carico [N]		
		Diametro interno		Diametro esterno		Lunghezza		Flangia			Fori di fissaggio			C	C ₀	
		dr	toll.	D	toll.	L	toll.	D ₁	H	PCD	d1	d2				h
KBF8UU	4	8	+0.008	16	0	25	0	32	5	24	3.5	6	3.1	0.012	270	410
KBK5UU [K=25]				0	-0.008											
KBF12UU	4	12	+0.008	22	0	32	0	42	6	32	4.5	7.5	4.1	0.012	520	800
KBK12UU [K=32]				0	-0.009											
KBF16UU	5	16	+0.009	26	0	36	-0.20	46	6	36	4.5	7.5	4.1	0.015	590	910
KBK16UU [K=35]				0	-0.001											
KBF20UU	5	20	+0.009	32	0	45	0	54	8	43	5.5	9	5.1	0.015	880	1400
KBK20UU [K=42]				0	-0.001											
KBF25UU	6	25	+0.011	40	0	58	0	62	8	51	5.5	9	5.1	0.015	1000	1600
KBK25UU [K=50]				0	-0.011											
KBF30UU	6	30	+0.011	47	0	68	0	76	10	62	6.6	11	6.1	0.017	1600	2800
KBK30UU [K=60]				0	-0.001											
KBF40UU	6	40	+0.013	62	0	80	-0.30	98	13	80	9	14	8.1	0.017	2200	4100
KBK40UU [K=75]				0	-0.013											
KBF50UU	6	50	+0.013	75	0	100	0	112	13	94	9	14	8.1	0.020	3900	8100
KBK50UU [K=88]				0	-0.002											
KBF60UU	6	60	+0.013	90	0	125	0	134	18	112	11	17.5	10.8	0.020	4800	10000
KBK60UU [K=106]				0	-0.015											

Manicotti flangiati lunghi KBF/KBK...L



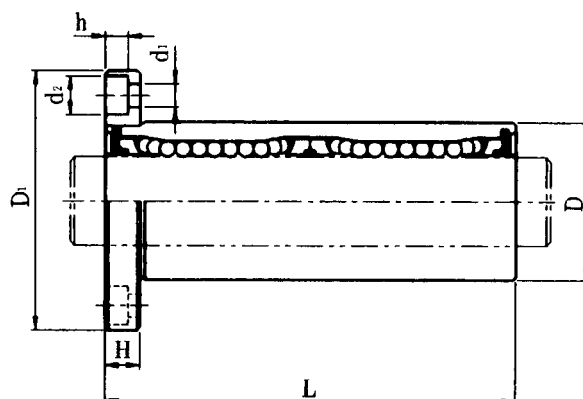
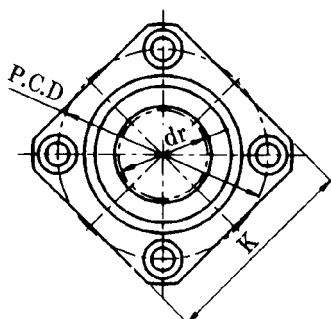
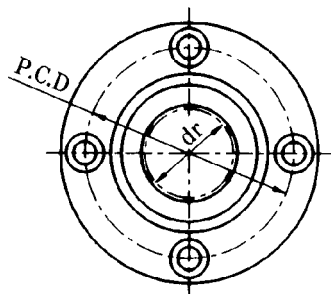
Tipo KBF...LUU



Tipo KBK...LUU

Modello	Dimensioni principali [mm]									
	N.di circuiti di sfere	Peso grf	Diametro interno		Diametro esterno		Lunghezza		Diametro flangia	
			dr	Tolleranza	D	Tolleranza	L	Tolleranza	D ₁	Tolleranza
KBF 8LUU	4	53	8	+0.009 -0.001	16	+0.000 -0.009	45	+0.0 -0.3	32	+0.0 -0.2
KBK 8LUU	4	46	8	+0.009 -0.001	16	+0.000 -0.009	45	+0.0 -0.3	32	+0.0 -0.2
KBF 12LUU	4	100	12	+0.009 -0.001	22	+0.000 -0.011	57	+0.0 -0.3	42	+0.0 -0.2
KBK 12LUU	4	82	12	+0.009 -0.001	22	+0.000 -0.011	57	+0.0 -0.3	42	+0.0 -0.2
KBF 16LUU	5	187	16	+0.011 -0.001	26	+0.000 -0.011	70	+0.0 -0.3	46	+0.0 -0.2
KBK 16LUU	5	160	16	+0.011 -0.001	26	+0.000 -0.011	70	+0.0 -0.3	46	+0.0 -0.2
KBF 20LUU	5	260	20	+0.011 -0.001	32	+0.000 -0.013	80	+0.0 -0.3	54	+0.0 -0.2
KBK 20LUU	5	230	20	+0.011 -0.001	32	+0.000 -0.013	80	+0.0 -0.3	54	+0.0 -0.2
KBF 25LUU	6	515	25	+0.013 -0.002	40	+0.000 -0.013	112	+0.0 -0.4	62	+0.0 -0.2
KBK 25LUU	6	475	25	+0.013 -0.002	40	+0.000 -0.013	112	+0.0 -0.4	62	+0.0 -0.2
KBF 30LUU	6	655	30	+0.013 -0.002	47	+0.000 -0.013	123	+0.0 -0.4	76	+0.0 -0.2
KBK 30LUU	6	575	30	+0.013 -0.002	47	+0.000 -0.013	123	+0.0 -0.4	76	+0.0 -0.2
KBF 40LUU	6	1560	40	+0.016 -0.004	62	+0.000 -0.015	154	+0.0 -0.4	98	+0.0 -0.3
KBK 40LUU	6	1380	40	+0.016 -0.004	62	+0.000 -0.015	154	+0.0 -0.4	98	+0.0 -0.3
KBF 50LUU	6	3500	50	+0.016 -0.004	75	+0.000 -0.015	192	+0.0 -0.4	112	+0.0 -0.3
KBK 50LUU	6	3300	50	+0.016 -0.004	75	+0.000 -0.015	192	+0.0 -0.4	112	+0.0 -0.3
KBF 60LUU	6	4500	60	+0.016 -0.004	90	+0.000 -0.020	211	+0.0 -0.4	134	+0.0 -0.3
KBK 60LUU	6	4060	60	+0.016 -0.004	90	+0.000 -0.020	211	+0.0 -0.4	134	+0.0 -0.3

Manicotti flangiati lunghi KBF/KBK...L



Tipo KBF...LUU

Tipo KBK...LUU

Modello	Dimensioni principali [mm]								
	K	H	PCD	Fori di fissaggio	Tolleranza della flangia [mm]	Eccentricità [mm]	Tolleranza precarico [mm]	Capacità di carico [N]	
				d1 x d2 x h				Cn	Con
LMEF 8LUU	-	5	24	3.4x6.5x3.3	0.015	0.015	-0.005	431	784
LMEK 8LUU	25	5	24	3.4x6.5x3.3	0.015	0.015	-0.005	431	784
LMEF 12LUU	-	6	32	4.5x8.0x4.4	0.015	0.015	-0.005	657	1200
LMEK 12LUU	32	6	32	4.5x8.0x4.4	0.015	0.015	-0.005	657	1200
LMEF 16LUU	-	6	36	4.5x8.0x4.4	0.015	0.015	-0.007	1230	2350
LMEK 16LUU	35	6	36	4.5x8.0x4.4	0.015	0.015	-0.007	1230	2350
LMEF 20LUU	-	8	43	5.5x9.5x5.4	0.017	0.017	-0.009	1400	2750
LMEK 20LUU	42	8	43	5.5x9.5x5.4	0.017	0.017	-0.009	1400	2750
LMEF 25LUU	-	8	51	5.5x9.5x5.4	0.017	0.017	-0.009	1560	3140
LMEK 25LUU	50	8	51	5.5x9.5x5.4	0.017	0.017	-0.009	1560	3140
LMEF 30LUU	-	10	62	6.6x11.0x6.5	0.017	0.017	-0.009	2490	5490
LMEK 30LUU	60	10	62	6.6x11.0x6.5	0.017	0.017	-0.009	2490	5490
LMEF 40LUU	-	13	80	9.0x14.0x8.6	0.020	0.020	-0.013	3430	8040
LMEK 40LUU	75	13	80	9.0x14.0x8.6	0.020	0.020	-0.013	3430	8040
LMEF 50LUU	-	13	94	9.0x14.0x8.6	0.020	0.020	-0.013	6080	15900
LMEK 50LUU	88	13	94	9.0x14.0x8.6	0.020	0.020	-0.013	6080	15900
LMEF 60LUU	-	18	112	11.0x17.5x10.8	0.025	0.025	-0.013	7650	20000
LMEK 60LUU	106	18	112	11.0x17.5x10.8	0.025	0.025	-0.013	7650	20000